

SCALP VITALITY

SERVICE MENU



DIAGNOSE

SCALP CONCERN

DRY FLAKE

OILY FLAKE

IRRITATED SCALP

TENDERNESS

TIGHTNESS

NORMAL TO OILY

HOW TO IDENTIFY

- Obvious dry flake
- On or off scalp

- Obvious flake
- Oily scalp
- Oily roots
- Visibly greasy hair

- Dry or oily
- Sensitive
- Itchy
- Obvious sebum

- Sensitive
- Tender
- Dry or oily
- Itchy

- Dry
- Tightness
- Flakes
- Inflexibility
- Dehydrated

- Normal - oily scalp

CONSULTATION PROMPTS

Have you noticed any recent changes in the condition of your scalp?

What do you notice about the texture of your scalp?

What specific areas on your scalp do you feel discomfort?

Have you experienced any decolorization, sun exposure?

What do you notice about the texture of your scalp?

What, if any, changes have you noticed in the condition of your scalp?

Where are you experiencing dryness, or flakes on or off your scalp?

Where are you experiencing oily buildup, dryness, or any sensitivity?

What do you notice about the texture of your scalp?

Where are you experiencing oily buildup, dryness, or any sensitivity?

What specific goals or concerns do you have regarding your scalp health?

How often do you cleanse and treat your scalp?

How interested are you in exploring professional scalp treatments?

How often do you cleanse your scalp?

What do you notice about the sensitivity of your scalp?

What do you notice about the texture of your scalp?

Have you noticed any recent changes in the condition of your scalp?

How interested are you in exploring professional scalp care?

PREPARE AND CLEANSE

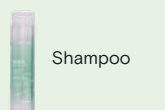
BACKBAR



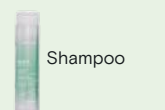
Shampoo Scrub



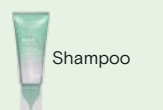
Shampoo Scrub



Shampoo



Shampoo



Shampoo



Shampoo

SCALP MASSAGE

Stimulating Scalp Massage

Stimulating Scalp Massage

Soothing Scalp Massage

Soothing Scalp Massage

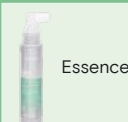
Stimulating Scalp Massage

Stimulating Scalp Massage

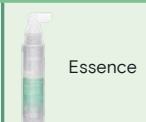
TREAT AND MAINTAIN

*Condition or treat your clients mid-lengths and ends for their hair concerns, lifestyle or salon chemical services with the appropriate Joico haircare regimen. Apply the conditioner and treatment prior to the Scalp Vitality Replenishing Essence application at the salon chair.

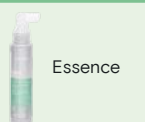
POST TREATMENT



Essence



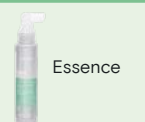
Essence



Essence



Essence



Essence



Essence