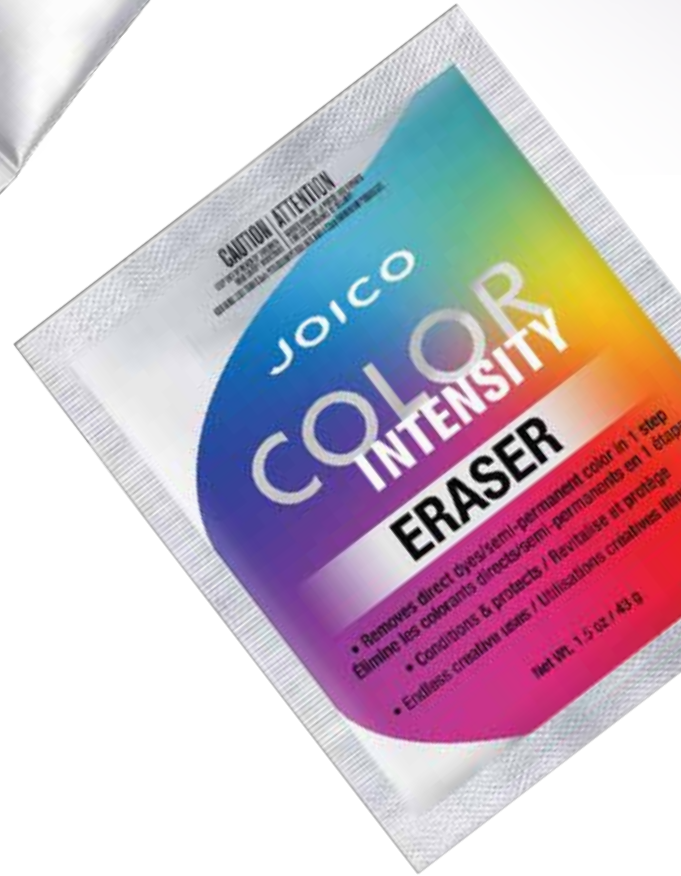


JOICO
the **joi** of healthy hair



**COLOR
INTENSITY**[®]

SWATCH CHART

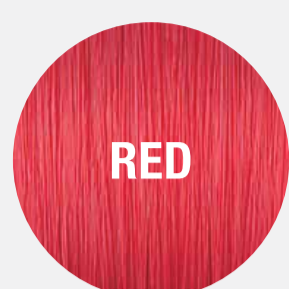
BOLD

PL = Prelighten Level



RUBY RED

PL:7



RED

PL:7



MAGENTA

PL:7



AMETHYST
PURPLE

PL:7



INDIGO

PL:7



SAPPHIRE
BLUE

PL:7



COBALT
BLUE

PL:7



TRUE BLUE

PL:8



PEACOCK
GREEN

PL:9



MERMAID
BLUE

PL:9



ORCHID

PL:9



PINK

PL:9



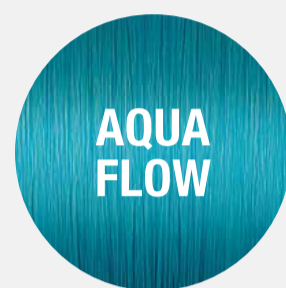
HOT PINK

PL:9



YELLOW

PL:9



AQUA
FLOW

PL:9



SOFT PINK

PL:10



LIGHT
PURPLE

PL:10



TITANIUM

PL:10

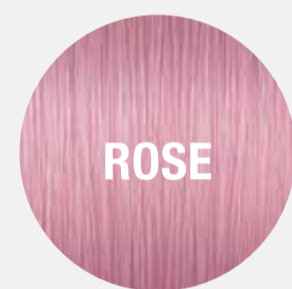
METALLIC



METALLIC
PEWTER

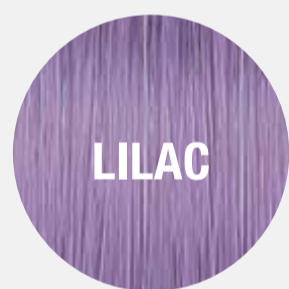
PL:10

POWER PASTELS



ROSE

PL:10



LILAC

PL:10

PEARL PASTELS



ROSE GOLD

PL:7



SILVER ICE

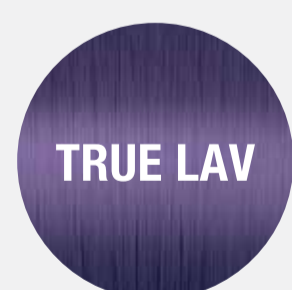
PL:10



BLUSH

PL:10

LOVE AURA



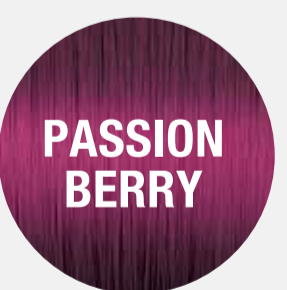
TRUE LAV

PL:9



PERI-WINK

PL:9



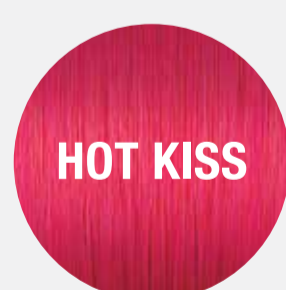
PASSION
BERRY

PL:8



MAUVE
AMOUR

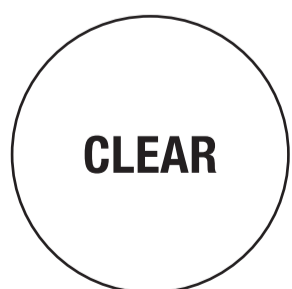
PL:9



HOT KISS

PL:8

+CLEAR MIXER



CLEAR



HOW-TO

Color Intensity Eraser is mixed with water (H₂O), or 10 (3%) or 20 (6%) Volume Veroxide® or LumiShine® developer.

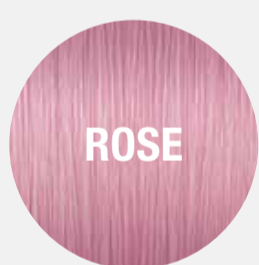


COLOR ERASER USER GUIDE

MIXTURE		BEFORE	AFTER
Eraser + Water (H ₂ O)	Direct Dyes that are almost completely faded or for muted/pastel shades.		
Eraser + 10 Volume	Direct Dyes that are partially faded or are mid-level/semi-saturated shades.		
Eraser + 20 Volume	Direct Dyes that are fairly recent/fresh or are a deep, vibrant, or red shade.		

COLOR ERASER USER GUIDE

WATER



10 VOLUME (3%)



20 VOLUME (6%)



Color Intensity Eraser is mixed with water (H₂O), or 10 (3%) or 20 (6%) Volume Veroxide® or LumiShine® developer.

STEP 1

Mix

COLOR INTENSITY ERASER

in a **1:2 RATIO**

- 1 part Color Intensity Eraser
- 2 parts H₂O, or 10 (3%) or 20 (6%) Volume developer



STEP 2

Using a color brush,

APPLY ONLY TO HAIR THAT HAS BEEN PRELIGHTENED

AND TREATED

with direct dyes or semi-permanent haircolor.

STEP 3

Process for

UP TO 30 MINUTES AT

ROOM TEMPERATURE,

checking every

2-5 MINUTES

until desired result is achieved.

STEP 4

Thoroughly rinse

COLOR INTENSITY ERASER

from hair, then shampoo with

K-PAK® COLOR THERAPY

until water runs clear.



STEP 5

Follow with

K-PAK CUTICLE SEALER

(optional) and

K-PAK COLOR THERAPY

CONDITIONER.

