

JOICO



# SUNSET MELT



Formula 1: 2 parts Color Intensity Sapphire Blue + 1 part Black Pearl

Formula 2: 1 part Color Intensity Clear + 1 part Color Intensity Indigo

Formula 3: 2 parts Color Intensity Hot Pink + 1 part Color Intensity Soft Pink

Formula 4: Color Intensity Orange

Formula 5: Color Intensity Yellow

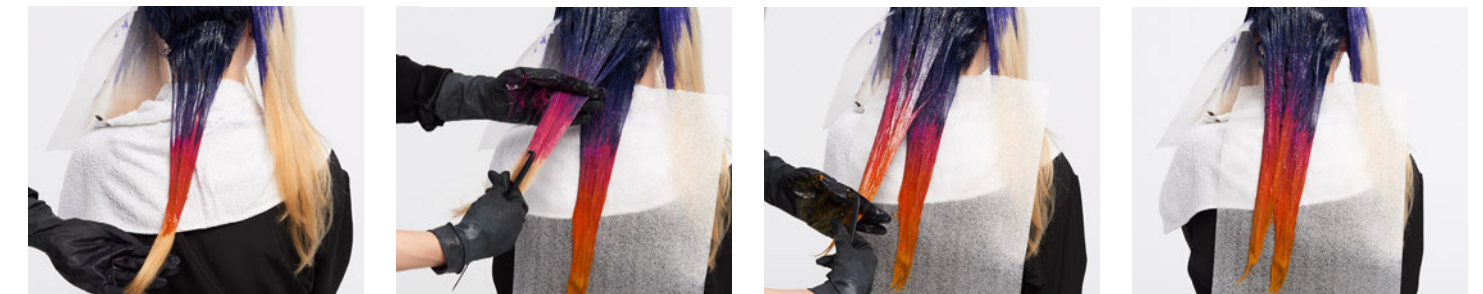


**1** Begin by prelightening hair using a virgin bleach application; applying first to mid-shaft and ends, then applying to scalp

**2** Starting at the top of the head, paint a “teardrop” shaped section using Formula 1.  
NOTE: The point of the teardrop section is at the center of the front hairline.

**3** Continue the teardrop shape as you work your way down the sides and back of the head with Formula 1.

**TIP:** Apply color to both the top and bottom of each parting to ensure proper saturation.



**6B**

**6C**

**6D**

**6E**



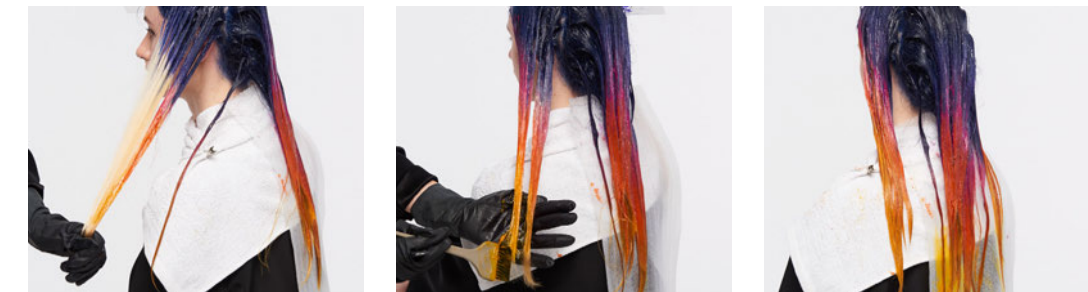
**4** Apply Formula 1 from the scalp area to 3 inches down the hair shaft in the crown area and 1 inch down the hair shaft in the front hairline area. Work your way toward the front hairline taking ½-inch partings.

**TIP:** Take a small piece of hair from the completed back section to use as your guide when applying Formula 1 to the side and front sections.

**5** Starting at the back of the head, take ½-inch partings and apply Formula 2 approximately 3 to 4 inches down the mid-shaft. Work your way up to the crown area using the “scissoring” technique with the fingers to gently smudge any lines of demarcation.

**TIP:** Gently rest (don’t push!) each section on top of the previous.

**6A** Starting at the back of the head, take ½-inch partings and apply Formulas 3, 4, and 5 down each parting.



**7** Repeat this process on both sides of the head and time for 20 minutes at room temperature.

**8** Shampoo with K-PAK Color Therapy and tepid water; rinse and lather at the same time to keep darker shades from bleeding onto lighter shades. Shampoo again with K-PAK Color Therapy; rinse. Condition with K-PAK Color Therapy; rinse and style hair as desired.

